

FUNDACIÓN SOLTÍ   
Juntos por la investigación en cáncer de mama

[www.gruposolti.org](http://www.gruposolti.org)

## Envision SUMMIT

Drawing the portrait of  
the future: Therapeutic  
Strategies in Breast Cancer

24<sup>th</sup> November 2017

Casa del Lector (Matadero Madrid)  
*Paseo de la Chopera, 14, 28045, Madrid*

### Platinum Sponsors



### Golden Sponsors



NOVARTIS



### Silver Sponsors



GUARDANT HEALTH<sup>®</sup>



### Also contributing

\*updated 26/10/2017



DRAWING THE  
PORTRAIT OF THE FUTURE  
*Therapeutic Strategies in Breast Cancer*

FUNDACIÓN SOLTÍ   
Juntos por la investigación en cáncer de mama



09.45h – 10.00h

**Welcome**

**Aleix Prat**  
*SOLTI Scientific Committee  
Coordinator*

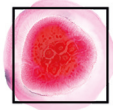
---

10.00h – 10.05h

**Pre-session  
interactive questions**

*Chair: Judith Balmaña*  
*Vall d'Hebron Institute of  
Oncology, Barcelona*

10.05h – 10.35h



**Targeting DNA repair  
pathway: Revealing the  
widening landscape  
of DNA repair modulators**

*Speaker: Andrew Tutt*  
*Institute of Cancer Research,  
London*

10.35h – 10.40h

**Interactive answers**

---

10.40h – 10.55h

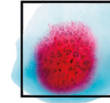
**Discussion:  
speakers-audience**

---

10.55h – 11.00h

**Pre-session  
interactive questions**

*Chair: Eva Ciruelos*  
*Hospital Universitario  
12 de octubre, Madrid*



11.00h – 11.30h

**CDK4/6 inhibition: shaping  
the upcoming standard  
of care in luminal disease  
(and beyond?)**

*Speaker: Sibylle Loibl*  
*German Breast Group,  
Neu-Isenburg*

11.30h – 11.35h

**Interactive answers**

---

11.35h – 11.50h

**Discussion:  
speakers-audience**

11.50h – 12.10h

**Coffee**

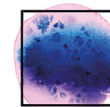
**Exhibition: Academia and  
Pharma partnership.  
Boosting clinical research.**

---

12.10h – 12.15h

**Pre-session  
interactive questions**

*Chair: Cristina Saura*  
*Hospital Universitari Vall  
d'Hebron, Barcelona*



12.15h – 12.45h

**Tints and shades of  
PI3K pathway inhibition:  
finding the right strategy**

*Speaker: Dejan Juric*  
*Massachusetts General  
Hospital, Boston*

12.45h – 12.50h

**Interactive answers**

---

12.50h – 13.05h

**Discussion:  
speakers-audience**

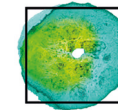
---

13.05h – 13.10h

**Pre-session interactive  
questions**

*Chair: Luis de la Cruz*  
*Hospital Universitario Virgen de  
la Macarena, Sevilla*

13.10h – 13.40h



**Spotlight on immuno-  
oncology: conceptualizing  
the right approaches for  
breast cancer subtypes**

*Speaker: Fabrice André*  
*Institute Gustave Roussy, Villejuif*

13.40h – 13.45h

**Interactive answers**

---

13.45h – 14.00h

**Discussion:  
speakers-audience**

---

14.00h – 15.00h

**Networking lunch**